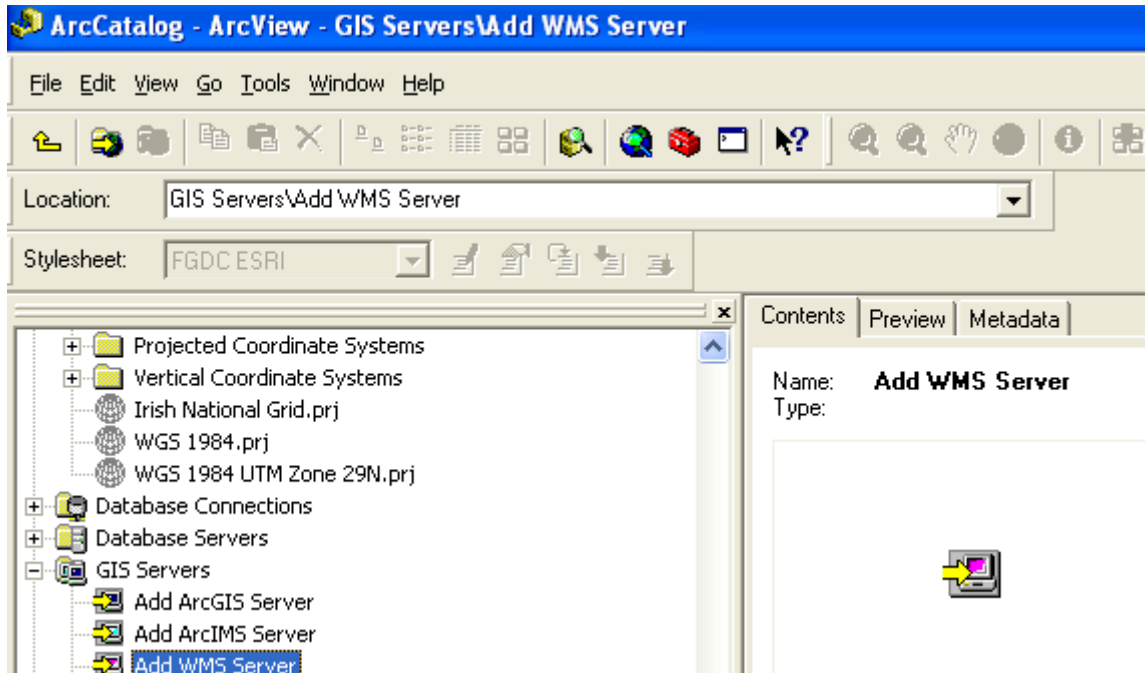


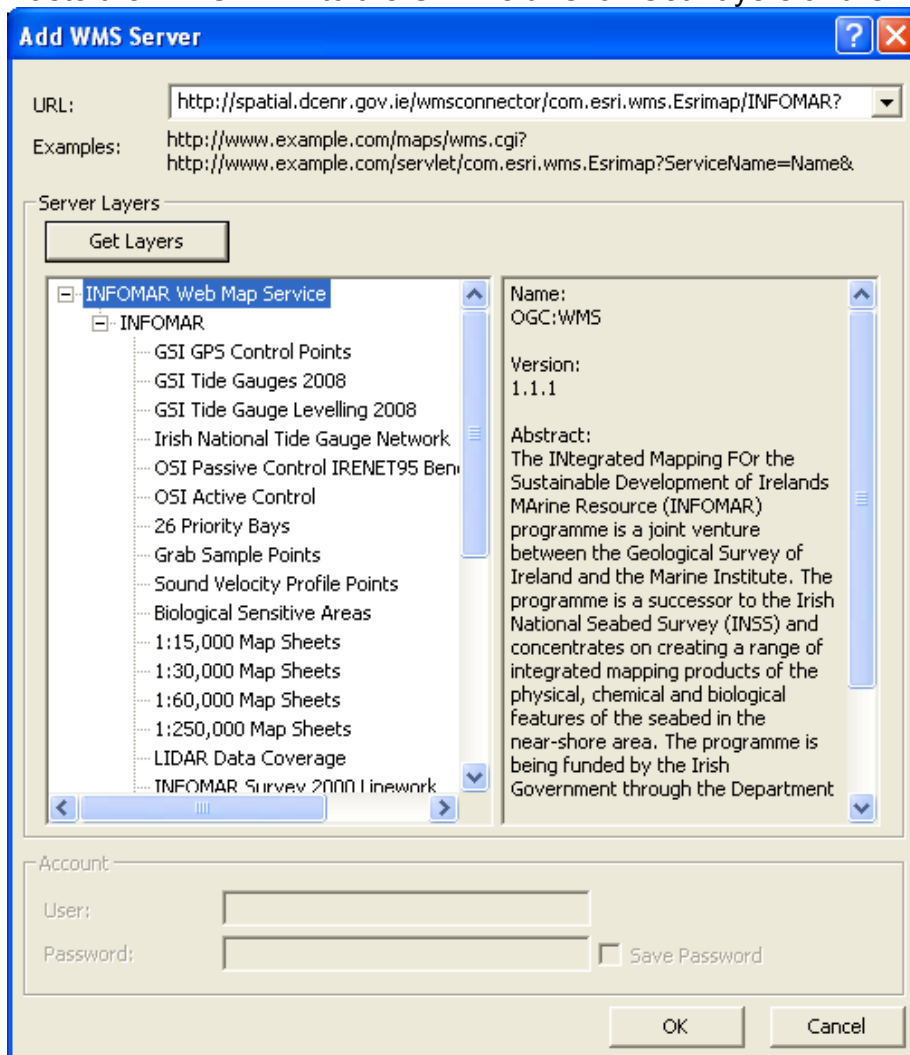


## Opening a GSI WMS in ArcGIS

1. Copy the link eg <http://spatial.dcenr.gov.ie/wmsconnector/com.esri.wms.Esrimap/INFOMAR?>
2. Open ArcCatalog and scroll down to GIS Servers
3. Double-click Add WMS Server

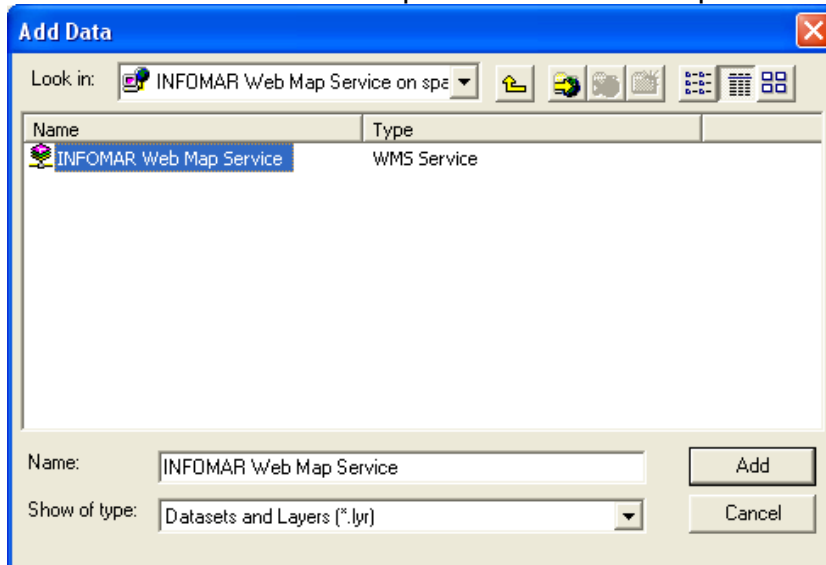


4. Paste the WMS link into the URL field. Click Get Layers and OK.

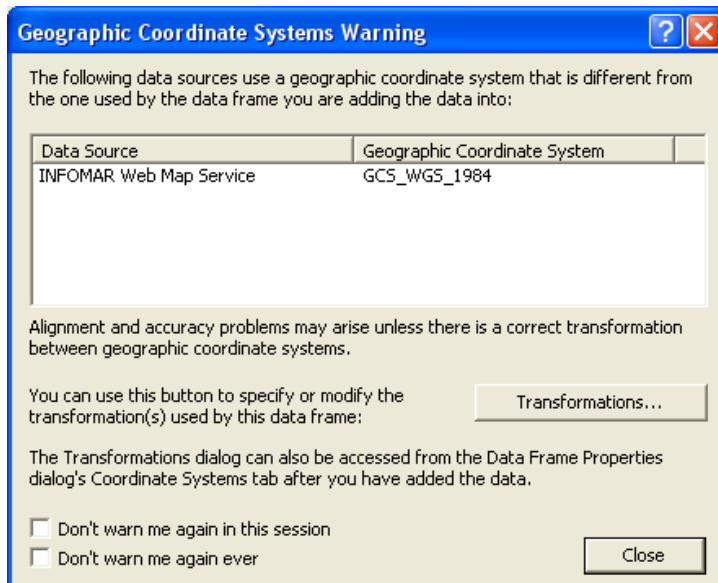




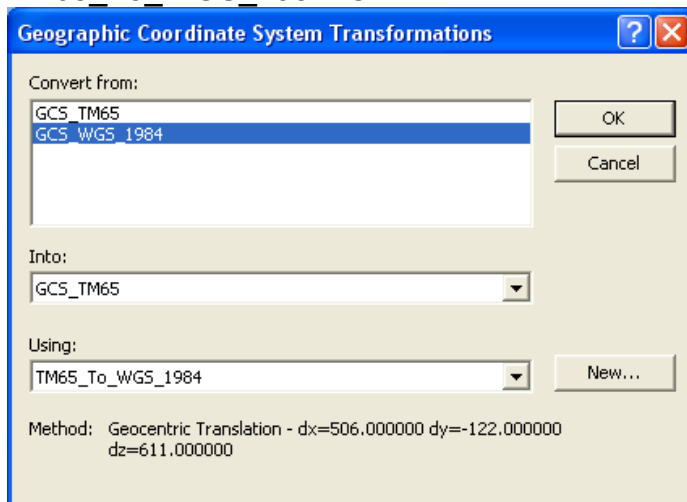
- Open ArcMap – Set your Layers to the Coordinate System you wish to work in. Right Click Layers – Properties and set Coordinate System.
- Add the INFOMAR Web Map Service into ArcMap. File – Add Data



- You may get a warning message if you are trying to open the INFOMAR WMS in Irish National Grid.

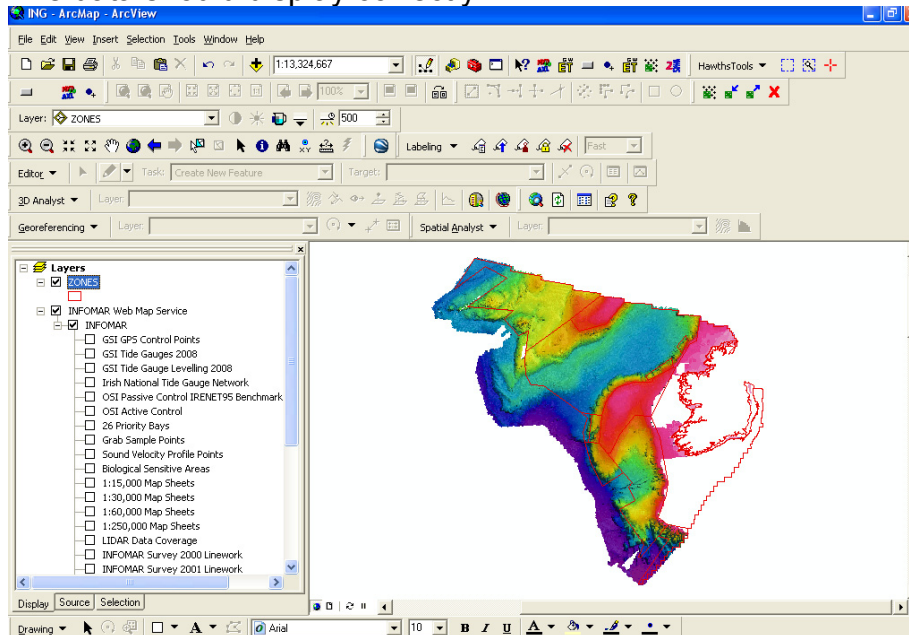


- Click Transformations and then Convert from GCS\_WGS\_1984 Into GCS\_TM65 Using TM65\_To\_WGS\_1984. OK.





The data should display correctly.



- If you get any ArcMAP drawing errors – Right click on INFOMAR Web Map Service and click Change Coordinate System – Select TM65-IrishGrid and Apply and OK. The map should draw correctly.

